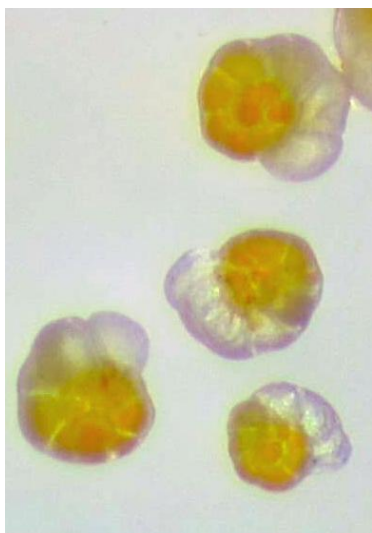
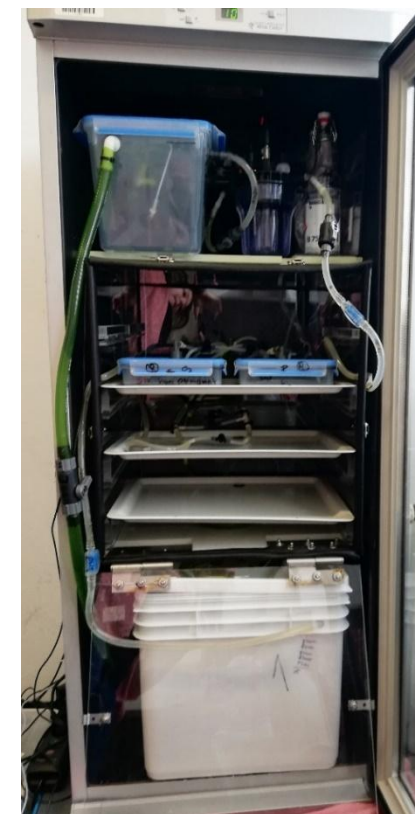
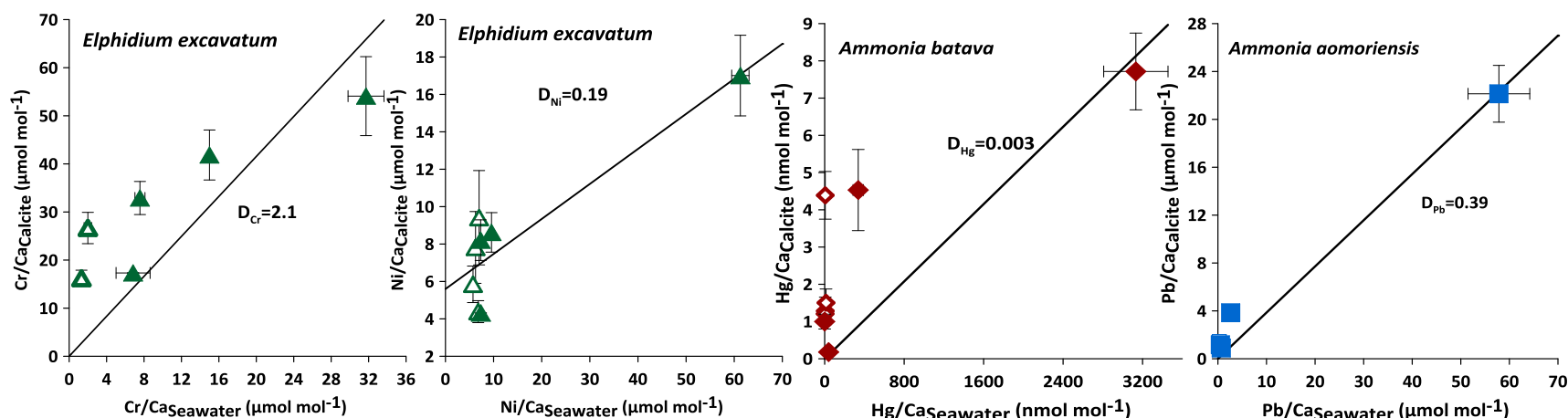
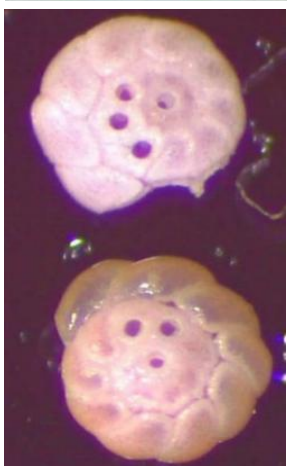


Heavy metal uptake of near-shore benthic foraminifera inferred from multi-metal culturing experiments

Sarina Schmidt, GEOMAR Helmholtz Centre for Ocean Research Kiel



- **Motivation:** anthropogenic heavy metal input into shelf areas
- **Foraminifera** (unicellular organisms with calcite shell) incorporate environmental signals into their tests
- **Method:** Culturing experiments with elevated metal concentrations + analysis of foraminiferal calcite
- **Results & Application:** correlation between heavy metal conc. in seawater and in foraminiferal calcite → quantification of metals in polluted and pristine environments → monitoring of ecosystem status possible



Schmidt et al., in prep.