

InnoFish – Innovative adaptation of integrated aquaculture to existing fish farms

Subject area:
Integrated Aquaculture



Contact person:
Dr. Harvey Harbach
Tel. 09281/409-4591
harvey.harbach@hof-university.de



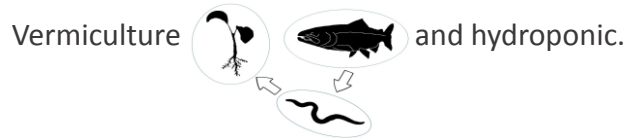
Institute for water- and energymanagement
University Hof
Alfons-Goppel-Platz 1
95028 Hof

Goal setting

- Residues from process water in traditional fish farming should be used economically. Environmental impact should be reduced.

Content

- Development of modules for the co-cultivation of other organisms in traditional fish farming.



First results

- In vermiculture (after 84 days of running-in) 12 - 96% of the NH_4 is reduced by about, without an increase in NO_2 and NO_3 , - Independent of the water temperature (0.9° - 18.5°C)



Fig 1. Near-natural fish production in a traditional fish farm in Germany

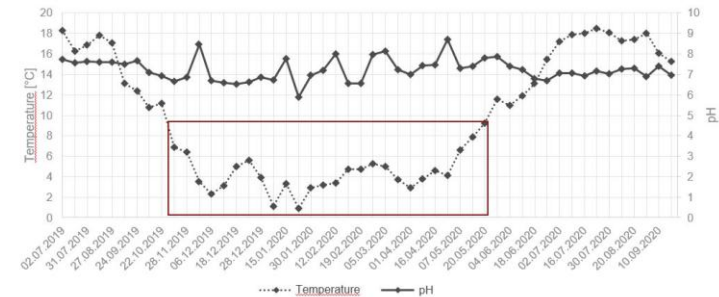


Fig 2. Seasonal course of temperature (°C) and pH in the experimental pond of the fish farm